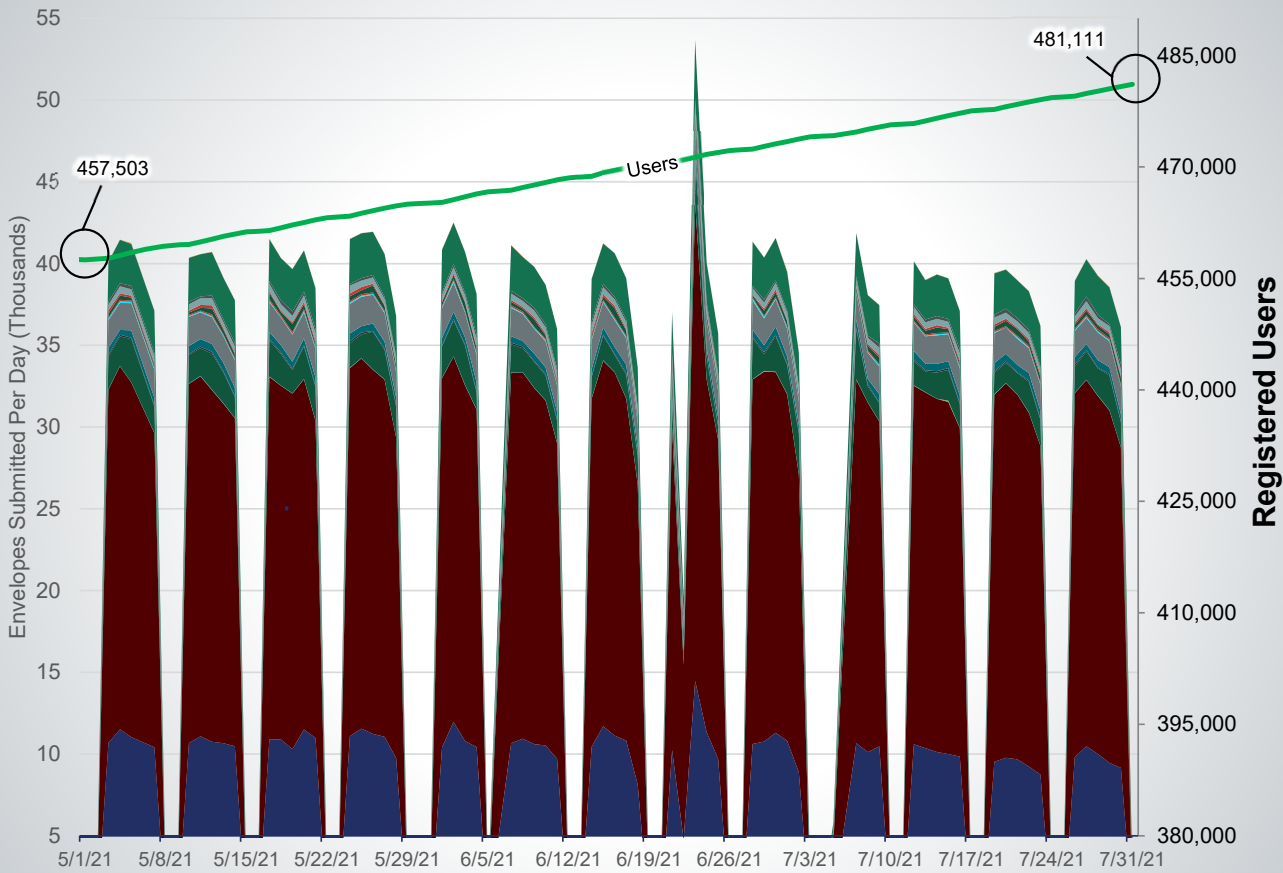




# Status Update

JCIT Meeting  
August 13, 2021

# Transaction Volume: 5/1/2021 to 7/31/2021



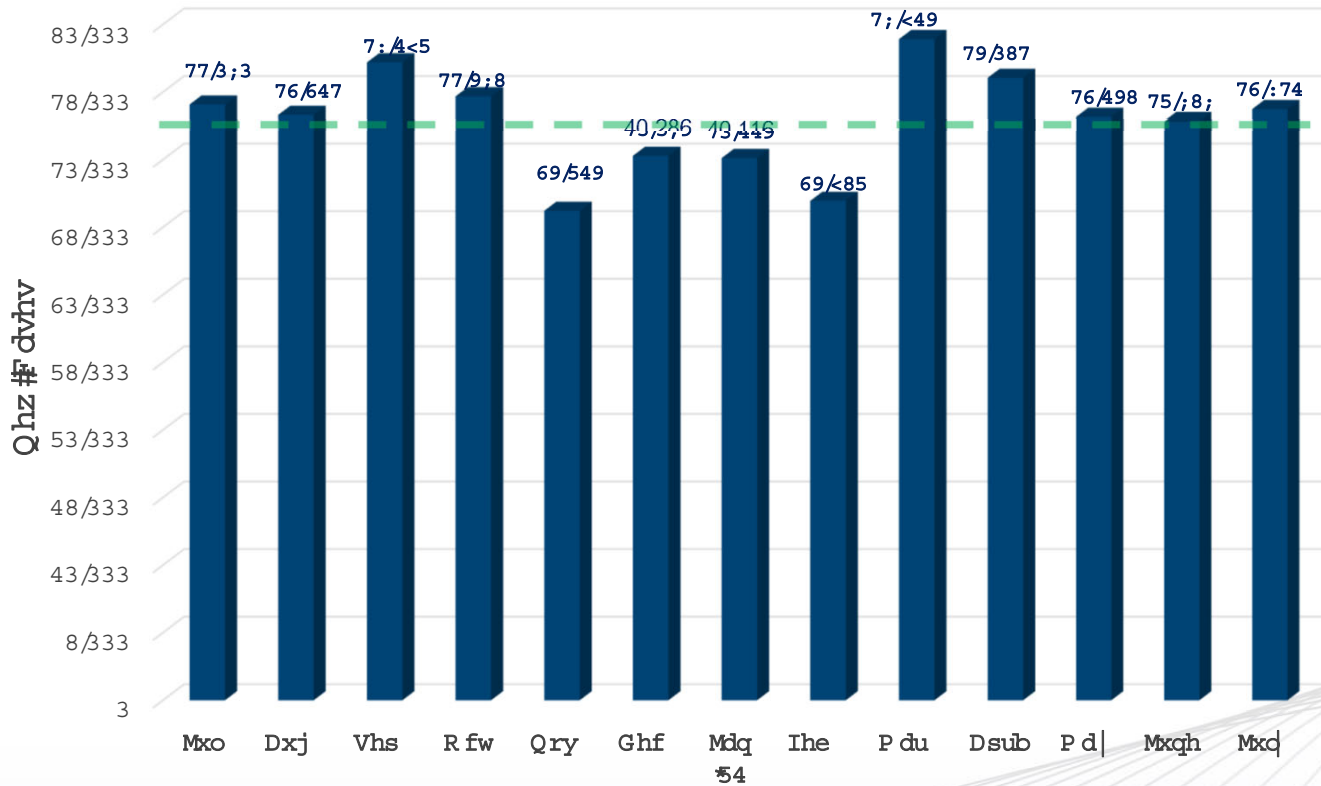
## Summary

- **Over 481k user accounts** created to-date
- EFM currently receiving **~38,000 envelopes per day**
- State filing portal accounts for 78% of transactions; remaining 22% stem from commercial EFSP submissions
- Severity incident on 6/22 illustrates the impact to filing volume, which recovered the following day
- **Filing Volume**
  - 6/22 – 20,277
  - 6/23 – 54,663
  - June Average – 40,128

# Coronavirus Impact on Texas eFiling



Q hz #F dvhv# lhg



**Filing and case volume appear to have fully recovered from Coronavirus pandemic impact**

## Year / Year Filing Comparison

### July 2020

Case Category	Volume
Civil	166,324
Criminal	44,426
<b>Total</b>	<b>210,750</b>

### July 2021

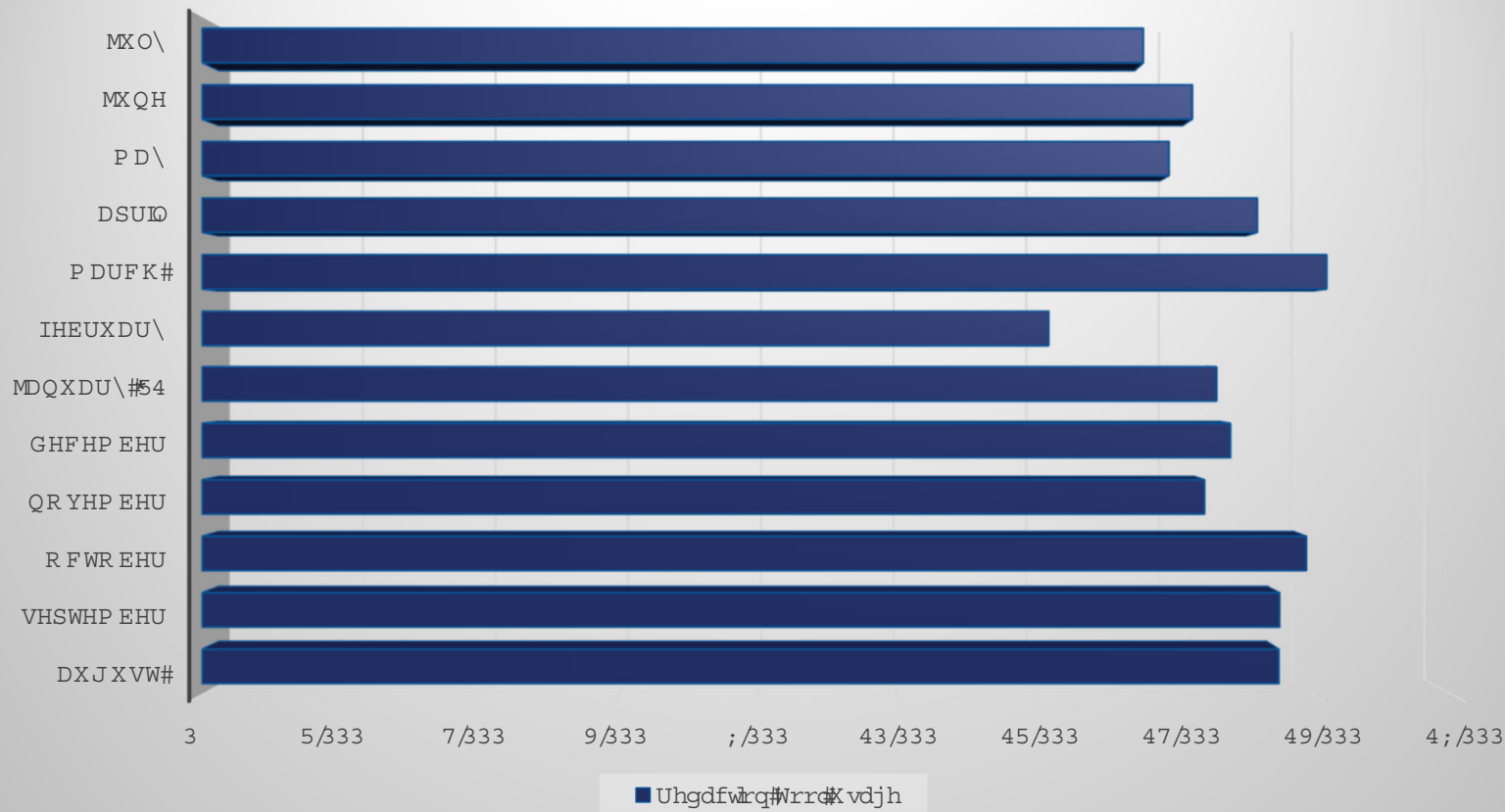
Case Category	Volume
Civil	185,827
Criminal	58,644
<b>Total</b>	<b>244,471</b>

\*Pre-pandemic case volume levels

# Redaction Utilization



Uhgdfrq#Wrrd#vdjh



- Solution has been **utilized ~435k times** since launch
- **Almost 14k utilizations in July**
- **Service implemented and available within 3 EFSPs**
  - eFileTexas
  - FileTime
  - ProDoc

# TX E-Filing: JP

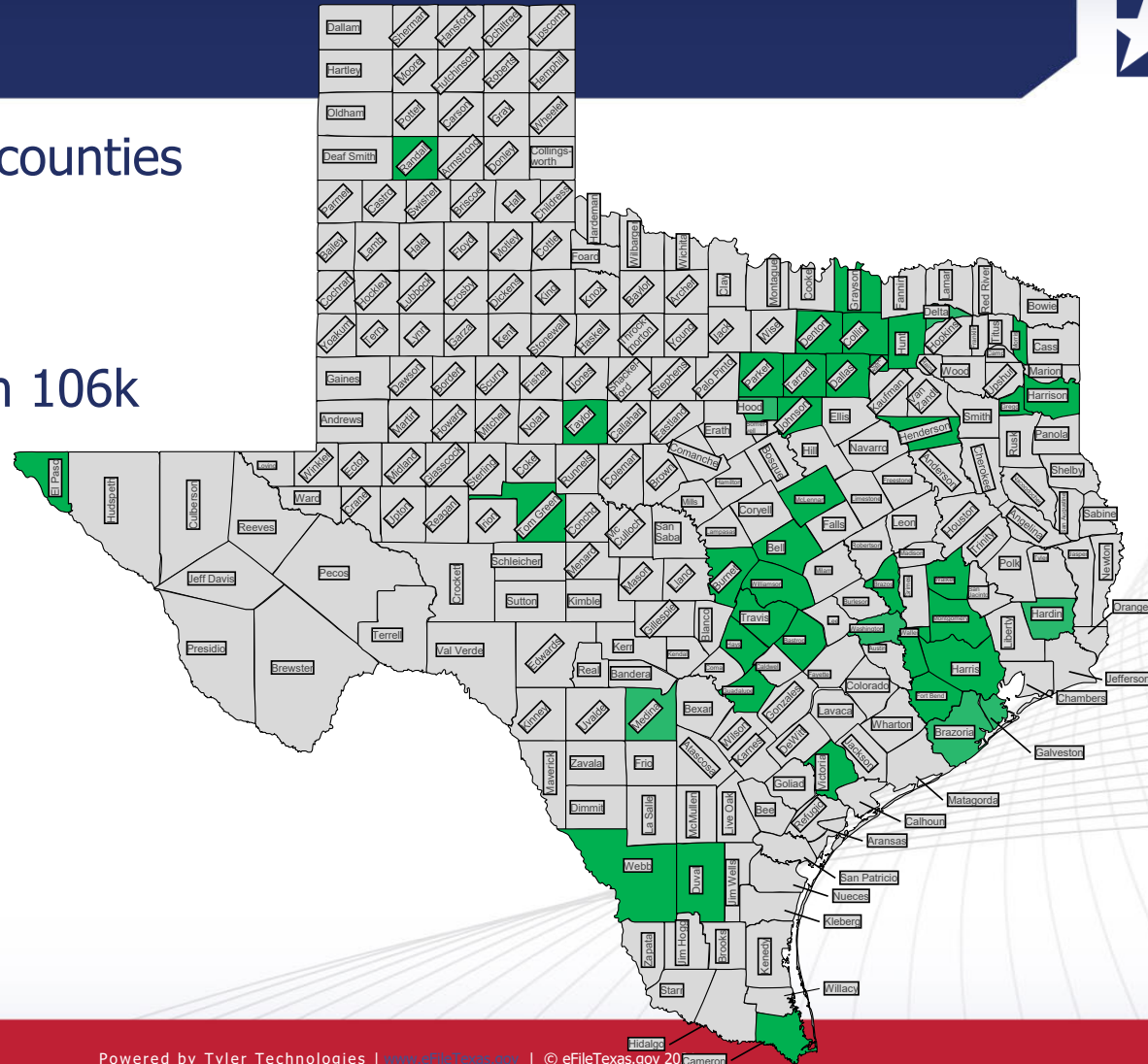


- 165 precincts across 42 counties are live
  - 7 active engagements
  - 3 engagements pending
- JPs contribute more than 106k filings per month

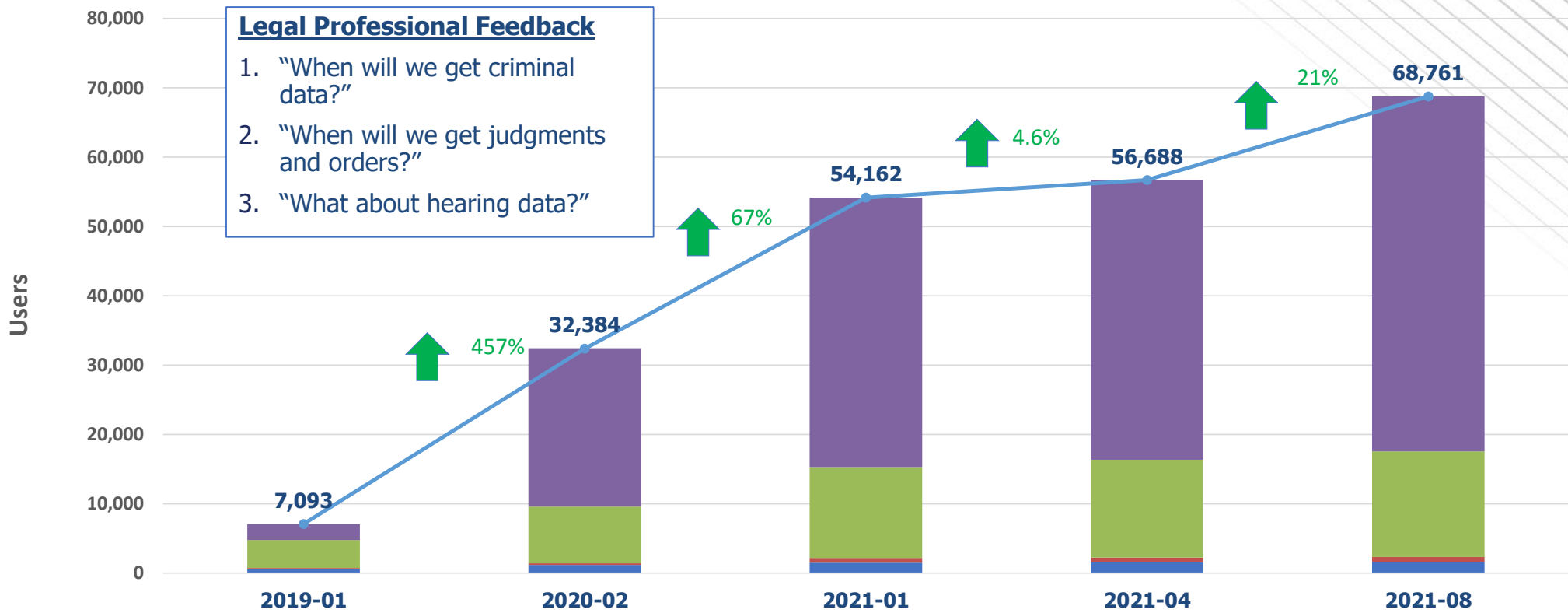
**\*Note:** Not all live counties are live with all precincts

**Legend**

- Live
- Not Live

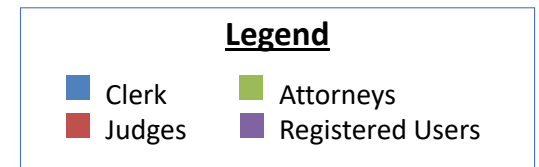


# re:SearchTX Update



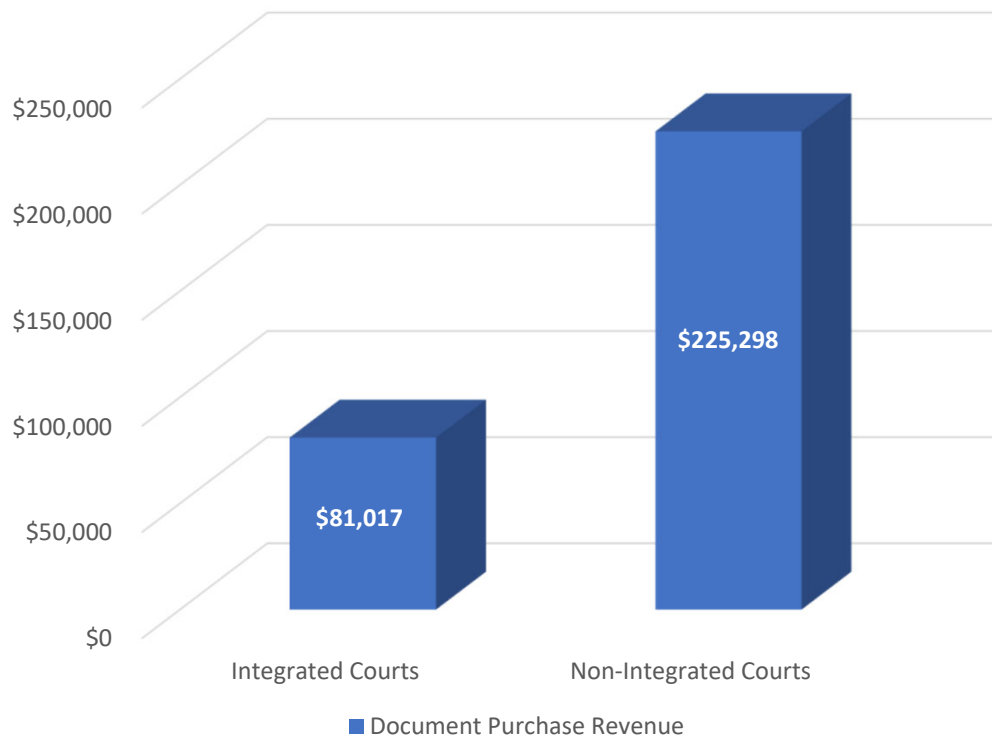
## Upcoming Integrations

- Bexar County
- Travis County
- Polk County



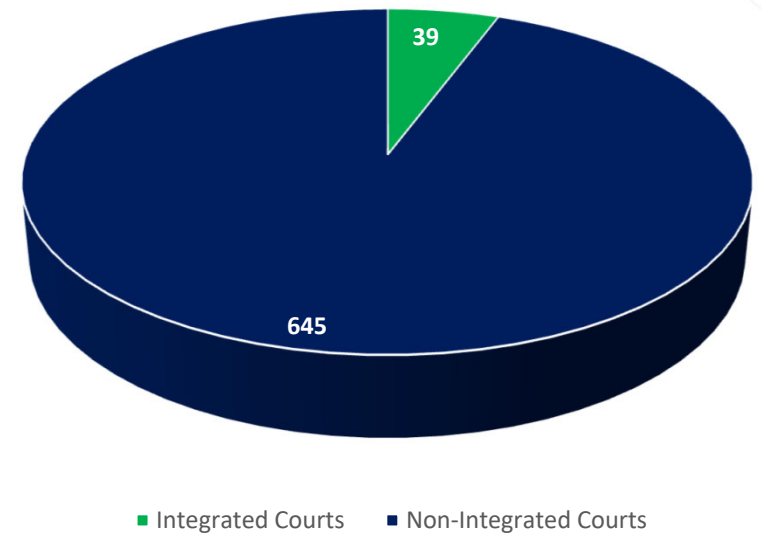
# re:SearchTX Document Purchase Sales

### Document Purchase Revenue

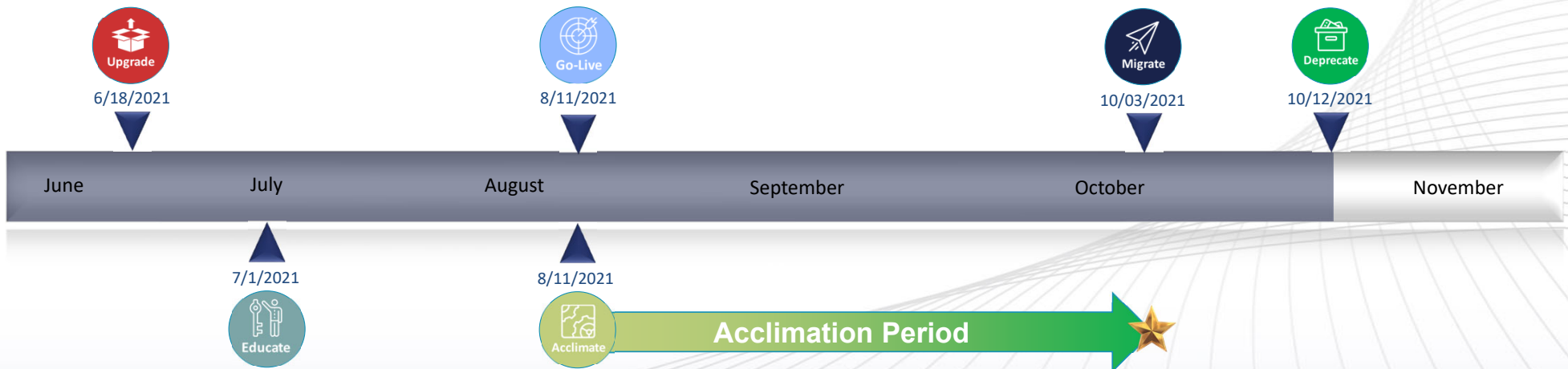
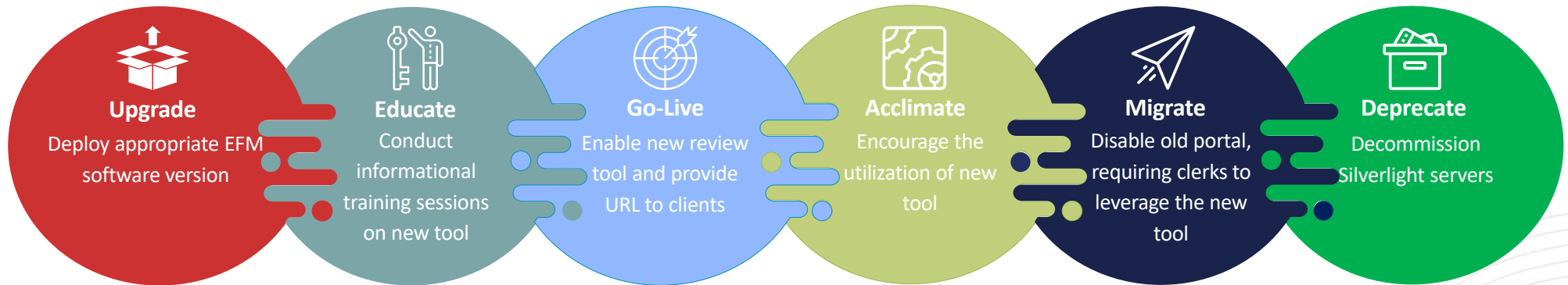


Only 18 Counties (39 Courts out of the 645 Courts) that use re:SearchTX have developed an integration with their Case Management System

### Courts Integration Status



# Review Tool Implementation Update





# eFileTexas 2.0 Project Update



- Cycle 1 Analysis and Design Phase Complete
  - Beginning Execution Phase
- Cycle 1 Development began on 7/12:
  - Efiling Insights
  - Bulk Review Actions
  - ECF 5.0
- On track to deliver new development solutions to Stage in January 2022

# Automatic Certificate of Service - Update



## Automated Certificate of Service has passed the pilot testing and is being implemented across the state

### Week 1

- August 16<sup>th</sup> - 1st Half of Top 10
- August 19<sup>th</sup> - 2<sup>nd</sup> Half of Top 10

### Week 2

- August 23<sup>rd</sup> - 1/3 of Remaining 244
- August 25<sup>th</sup> - 1/3 of Remaining 244
- August 27<sup>th</sup> - 1/3 of Remaining 244

**Full list of counties in the various phases will be delivered via iContact today and be posted on our eFileTexas Reviewer Tool page**

#### Automated Certificate of eService

This automated certificate of service was created by the eFiling system. The filer served this document via email generated by the eFiling system on the date and to the persons listed below:

Envelope ID: 38957  
Status as of 02/27/2020 10:11:07 AM -06:00

#### Case Contacts

Name	BarNumber	Email	TimestampSubmitted	Status
April Scott		april.scott@tylertech.com	2/27/2020 10:09:50 AM	SENT
Andrew Burns		andrew.skrhak@tylertech.com	2/27/2020 10:09:50 AM	SENT

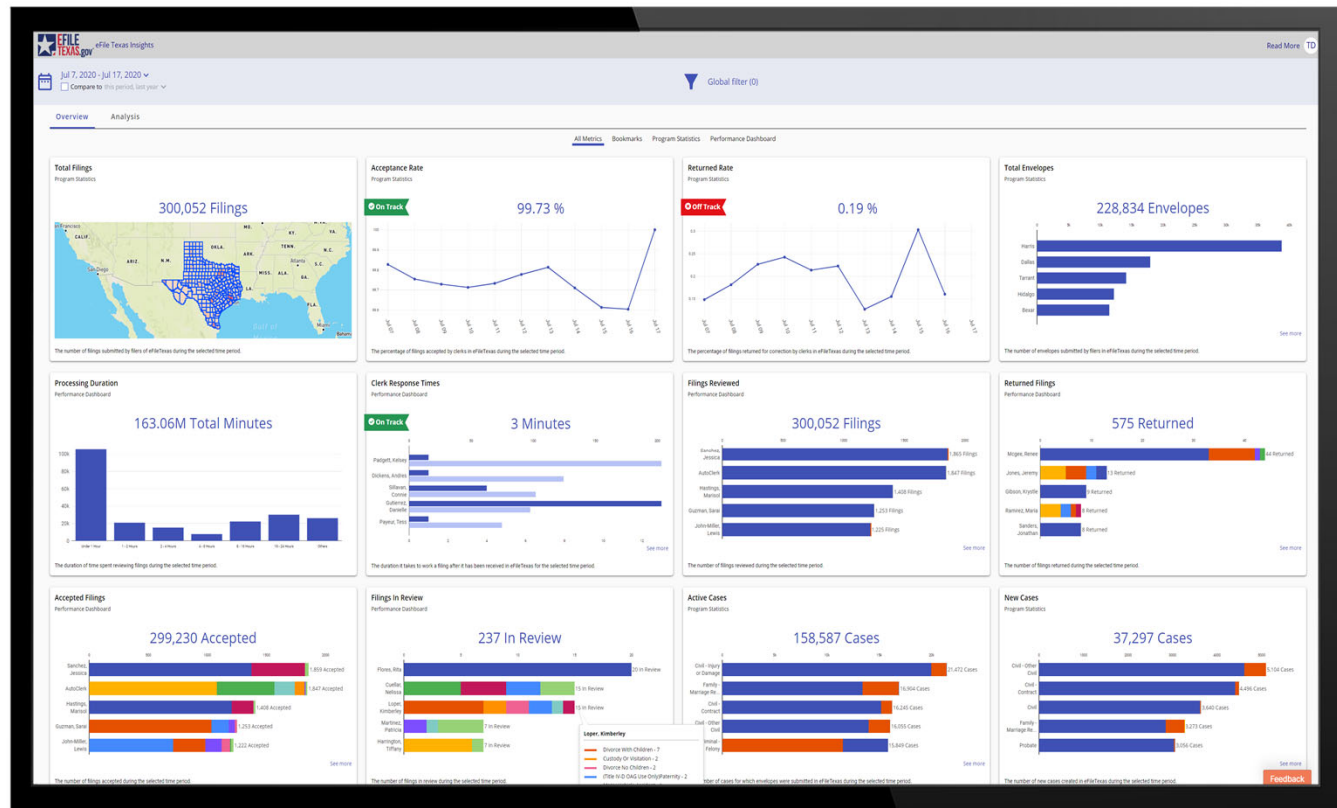
Associated Case Party: Devon Smith

Name	BarNumber	Email	TimestampSubmitted	Status
Jared Kenoyer		jared.kenoyer@tylertech.com	2/27/2020 10:09:50 AM	SENT
Chris Ricci		chris.ricci@tylertech.com	2/27/2020 10:09:50 AM	SENT

# eFiling Insights - Update



- Partnered with SMEs from around the state to conduct focus groups
  - Feedback was overwhelmingly positive
- Currently creating pilot training programs
  - Pilot Phase begins in September
- General production availability slated for early November
- Continue to deliver data and feature enrichment through Cycle 1 developments
  - Completes in May 2022



# SB41 Implementation Timeline

