

COVID-19 Operating Plan for the Leon Valley City Judiciary

Recognizing the need to ensure the health and safety of litigants, attorneys, visitors, court staff, judges, and other individuals entering the buildings housing the courts, the court of **Leon Valley** will implement the following protective measures:

General

1. All judges will comply with the Emergency Orders issued by the Supreme Court of Texas and Court of Criminal Appeals, including conducting in-person proceedings according to the guidance issued by the Office of Court Administration regarding social distancing, maximum group size, and other restrictions and precautions.
2. All judges will use all reasonable efforts to conduct proceedings remotely.
3. The presiding judge of the municipal court will maintain regular communication with the local health authority and mayor and adjust this operating plan as necessary with conditions in the city.
4. Judges will begin setting non-essential in-person proceedings no sooner than June 4, 2020

Judge and Court Staff Health

1. Judges and court staff who can perform the essential functions of their job remotely will telework when possible.
2. Judge and Court Staff Monitoring Requirements: Prior to entering the courtroom and municipal court building the judge, prosecutor, and clerks will undergo temperature check equal to or greater than 99.6 ° and respond to a list of signs and symptoms questions.
3. Judges or court staff who feel feverish or have measured temperatures equal to or greater than 99.6°F, or with new or worsening signs or symptoms of COVID-19 such as cough, shortness of breath or difficulty breathing, chills, repeated shaking with chills, muscle pain, headache, sore throat, loss of taste or smell, diarrhea, or having known close contact with a person who is confirmed to have COVID-19 will not be permitted to enter the building and should seek medical advice.
4. Judges and court staff will be required to wear face coverings, practice social distancing, and practice appropriate hygiene recommendations at all time.
5. Protective Measures: masks, and sanitizing liquid will be available for use.

Scheduling

1. The following court schedules are established to reduce occupancy in the court building: The court will exercise social distancing by only allowing a minimum number of people to assure that anyone individual will not be within 6 feet of another. The Court has created a floor plan to set out compliance with scheduling of non-essential court matters.

Vulnerable Populations

1. Individuals who are over age 65 and individuals with serious underlying health conditions, such as high blood pressure, chronic lung disease, diabetes, obesity, asthma, and those whose immune systems are compromised such as by chemotherapy for cancer or other conditions requiring such therapy are considered to be vulnerable populations.
2. Each judge will include information on orders setting hearings, dockets notices, and in other communications notifying individuals who are in vulnerable populations of the ability to contact the court to identify themselves as a vulnerable individual and receive accommodations. A notice with this information will be posted on the courts' websites and in conspicuous locations around the court building (a copy of which is attached).
3. Vulnerable populations who are scheduled for court will be accommodated by Vulnerable populations who are scheduled for court will be accommodated by inquiring if they qualify as a vulnerable person, and accommodate them by remote hearing.

Social Distancing

1. All persons not from the same household who are permitted in the court building will be required to maintain adequate social distancing of at least 6 feet.
2. No more than two individuals not from the same household will be permitted in an elevator. If more than one individual from the same household is in an elevator, no other individuals will be permitted in the elevator.
3. Each restroom has been evaluated to determine the appropriate capacity to ensure social distancing and the maximum capacity has been posted on each restroom door.
4. Public common areas, including breakrooms and snackrooms, have been closed to the public.

Gallery

5. The maximum number of persons permitted in the gallery of each courtroom has been determined and posted. The maximum capacity of the courtroom will be monitored and enforced by court staff.
6. The gallery of the courtroom has been marked to identify appropriate social distancing in the seating. Seating is limited to every other row.

Well

7. In each courtroom, the counsel tables, witness stand, judge's bench, and clerk, court reporter, and bailiff seating have been arranged in such a way so that there is social distancing of at least 6 feet between each space.

Hygiene

1. Hand sanitizer dispensers have been placed at the entrances to the building, outside of elevators on each floor, outside of each courtroom, and outside of bathrooms.
2. Tissues have been placed near the door of the courtroom, at counsel tables, at the witness stand, on the judges' benches, and in the hallways.

3. The Department of State Health Service's "Stop the Spread of Germs Flyer" has been posted in multiple locations on each floor of the court building.

Screening

1. When individuals attempt to enter the court building, a designated officer of the Leon Valley Police Department will ask the individuals if they are feeling feverish; have a cough, shortness of breath, or difficulty breathing; or have been in close contact with a person who is confirmed to have COVID-19. Individuals who indicate yes to any of these questions will be refused admittance to the court building.
2. When individuals attempt to enter the court building, the designated Leon Valley Police Department will use an infrared thermometer to determine the temperature of the individual. Individuals whose temperature equals or exceeds 100.0°F will be refused admittance to the court building.
3. Inmates being transported from the jail to the court building will be screened for symptoms of COVID-19 and have their temperature taken prior to transport. Inmates with symptoms or a temperature equal to or above 99.6°F will not be transported to the court building.
4. Staff who are screening individuals entering the court building will be provided personal protective equipment, including PPE specifically masks, gloves and sanitizers.

Face Coverings

1. All individuals entering the court building will be required to wear face coverings at all times.
2. Individuals will be encouraged to bring cloth face coverings with them, but if the individual does not have a cloth face covering, a disposable face mask will be provided.
3. Individuals who will be required to be in the court building for over 1 hour will be provided surgical masks and required to wear them while in the court building if the supply is available.

Cleaning

1. Court building cleaning staff will clean the common areas of the court building so that common spaces are cleaned at least every two hours.
2. Court building cleaning staff will clean the courtrooms between every hearing, between morning and afternoon proceedings, and at the end of each day the courtroom is used.
3. Court building cleaning staff have been provided cleaning supplies shown to be effective with this coronavirus.
4. Court building cleaning staff have been trained on proper cleaning techniques and provided appropriate personal protective equipment.

Other

The Presiding Judge will modify the COVID-19 Operating Plan as needed to provide a safe environment for court staff and individuals taking care of court matters.

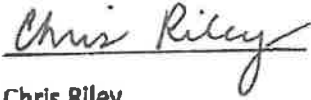
I have attempted to confer with all judges of courts with courtrooms in the court building regarding this Operating Plan. In developing the plan, I consulted with the local health authority and mayor, documentation of which is attached to this plan. I will ensure that the judges of courts with courtrooms in the court building covered by this Operating Plan conduct proceedings consistent with the plan.

Date: 5/28/2020



Presiding Judge of Municipal Court
Lawrence G. Morales

Approved:



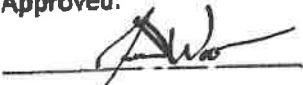
Chris Riley

Mayor of Leon Valley



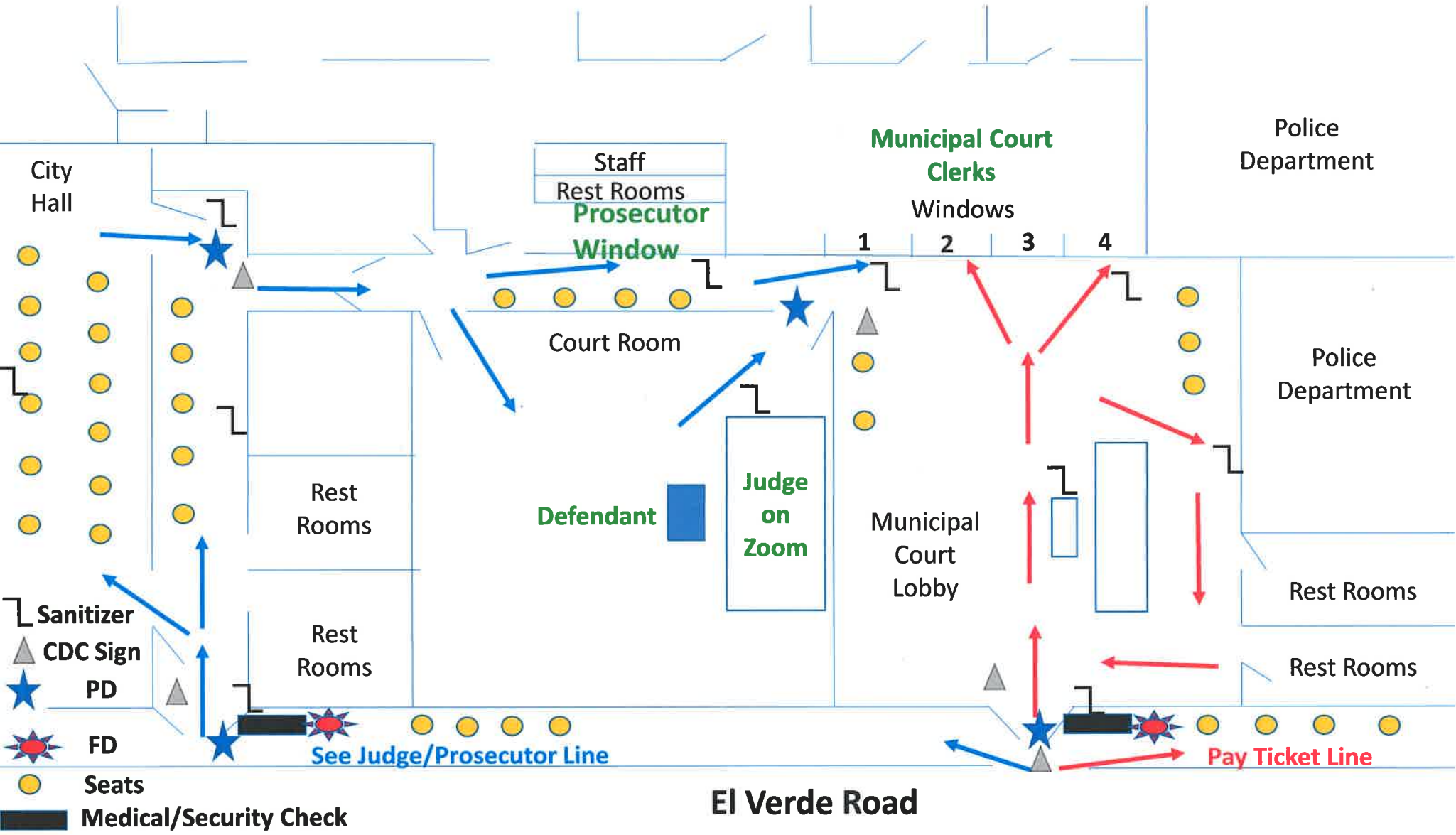
Consulted with San Antonio Metropolitan Health Authority

Approved:



Authorized Representative

Date: June 10, 2020



This diagram illustrates the layout and traffic flow of a Municipal Court building. The building is situated along El Verde Road. The layout includes a City Hall on the left, a Staff Rest Room, a Prosecutor Window, a Court Room, a Judge on Zoom room, a Municipal Court Lobby, and four Municipal Court Clerks Windows (1-4). The Police Department is located on the right side of the building. There are multiple Rest Rooms throughout the facility. A legend at the bottom identifies symbols for Sanitizer, CDC Sign, PD, FD, Seats, and Medical/Security Check. Blue arrows indicate the path for the Judge/Prosecutor, and red arrows indicate the path for the Pay Ticket Line.