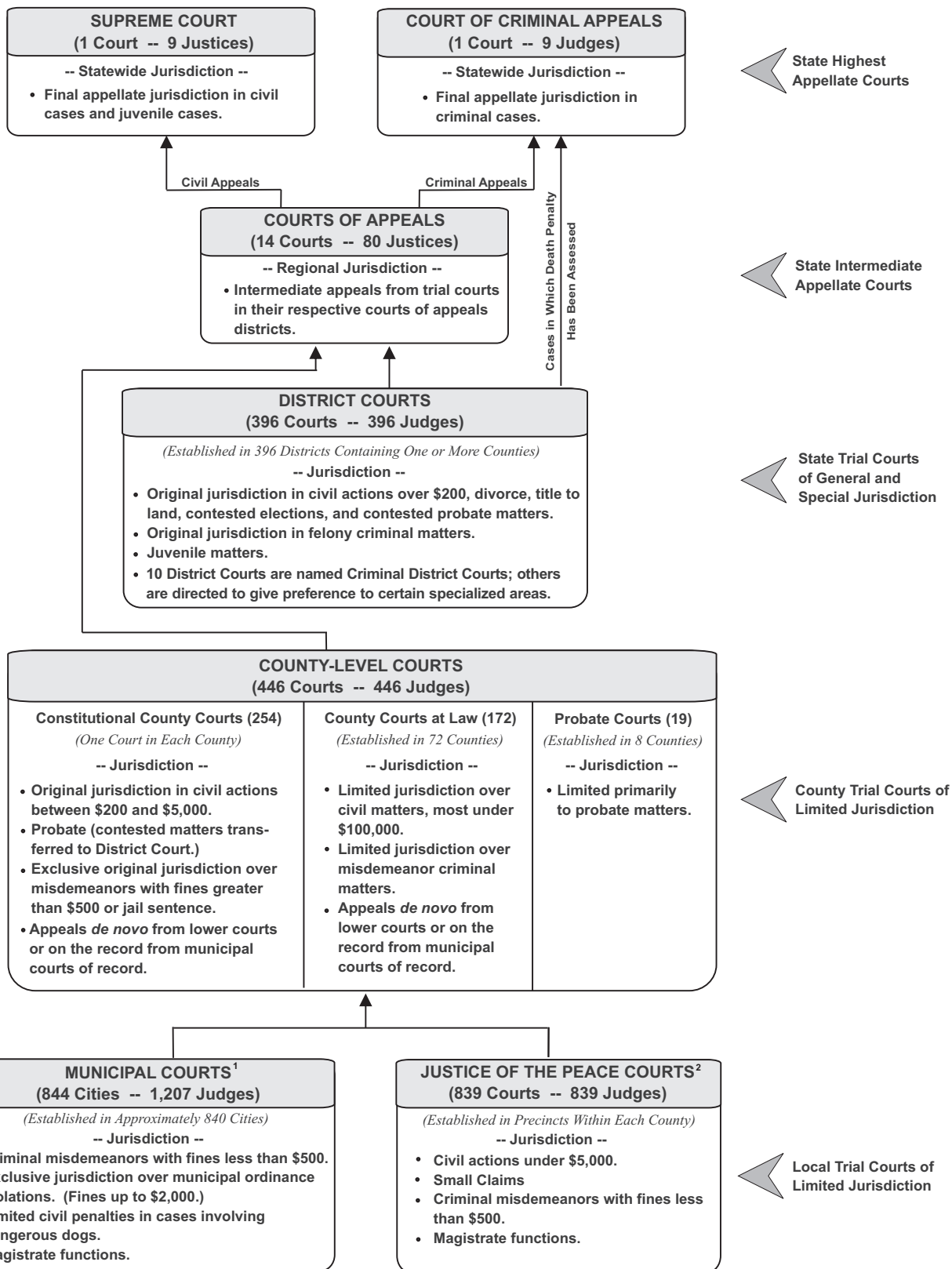


COURT STRUCTURE OF TEXAS

SEPTEMBER 1, 1996



¹ Some Municipal Courts are courts of record -- appeals from those courts are taken on the record to the county-level courts.
² All Justice of the Peace Courts and most Municipal Courts are not courts of record. Appeals from these courts are by trial *de novo* in the county-level courts, and in some instances in the district courts.